



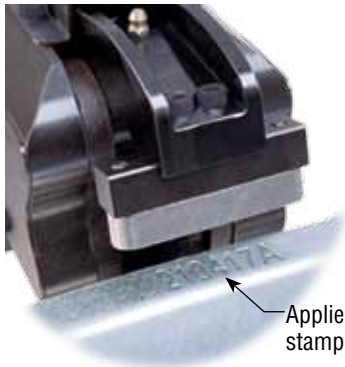
Automated Stamping for Part Identification

PNC66

ML315580

BENEFITS

- Provides a cost-effective solution for stamping identification characters into parts or material.
- High clamp force produces characters in draw quality steel.
- Reduces downtime to switch code.

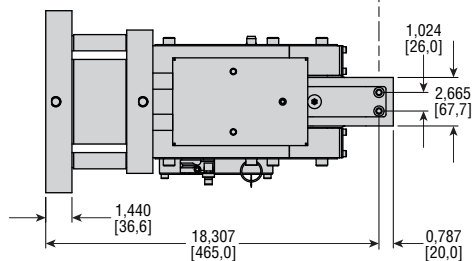
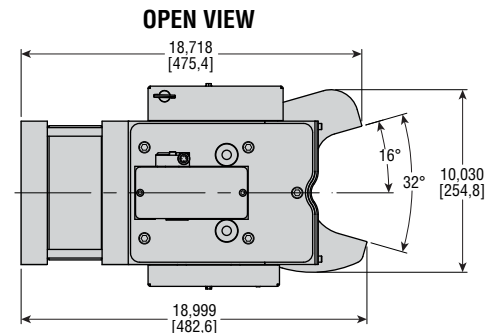
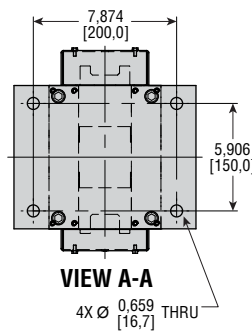
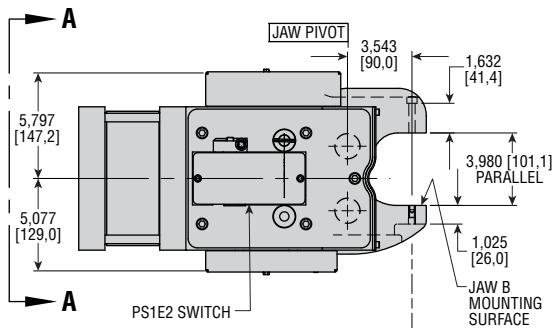


Applied in robotic cell to stamp shift codes onto parts.

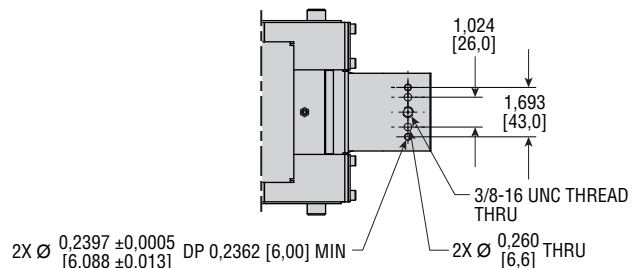


ORDER CODE	ML315580
UNIT DESCRIPTION	PNC66P-5-A16-S16-G01-PS1E2
JAW STYLES	A16-S16
TOTAL CLAMP FORCE	215 kN at 6 bar [48334 lbf at 87 psi]
OPERATING PRESSURE RANGE	4,5 to 6 bar [65 to 87 psi]
ESTIMATED WEIGHT	56 kg [123 lb]
TEMPERATURE LIMITS	-28° to 82°C [-20° to 180°F]
OPERATING TIME	1,5 seconds
LUBRICATION	Permanent for Non-Lube Air

DIMENSIONS



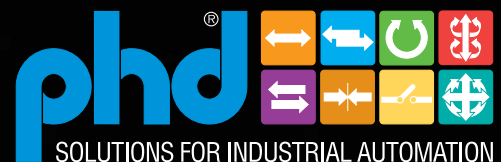
JAW B MOUNTING SURFACE



CP315580-EU



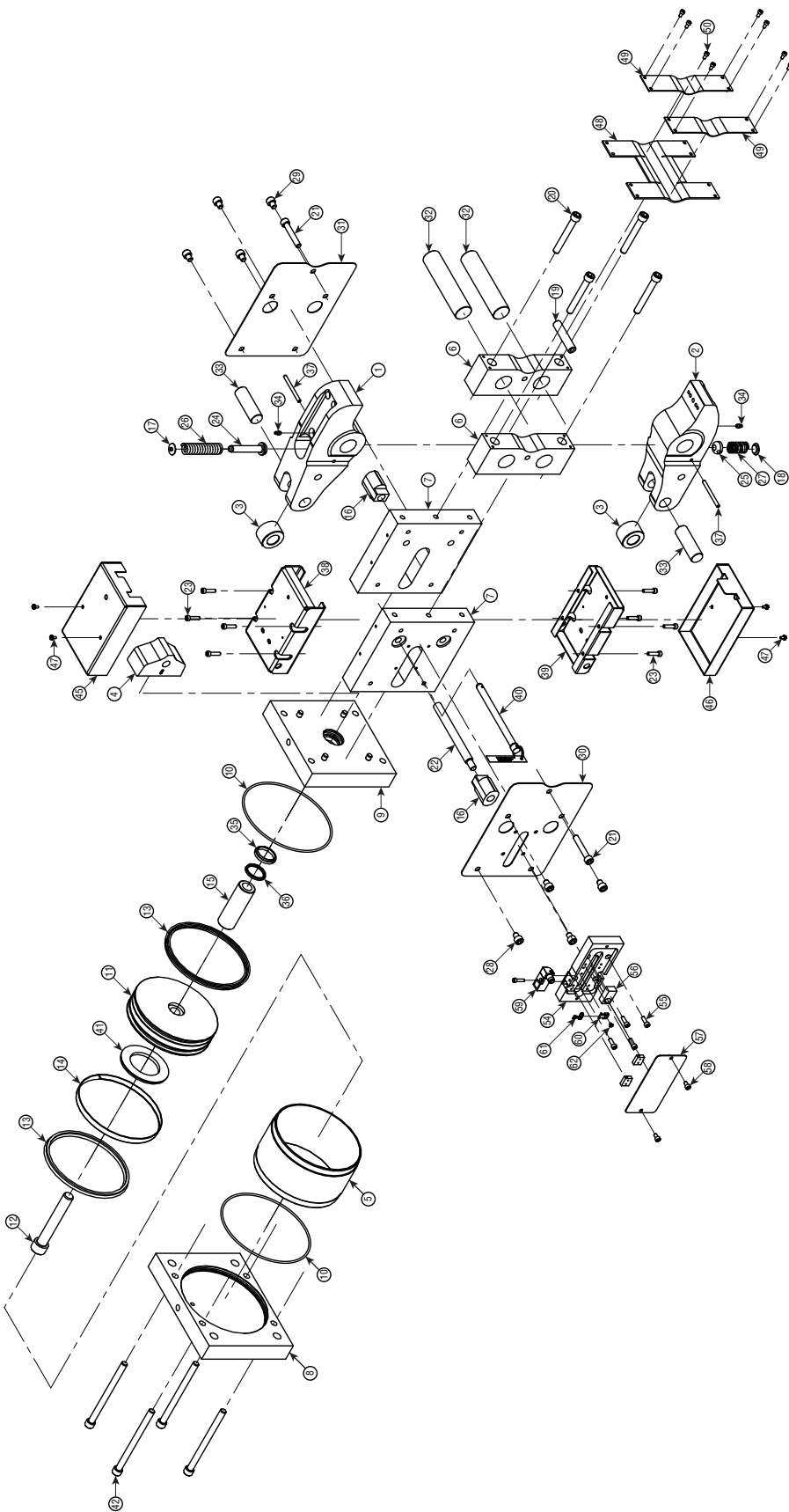
PHD is a member of the
MAC Distributor Network



SOLUTIONS FOR INDUSTRIAL AUTOMATION

www.phdinc.com

EXPLODED VIEW AND PARTS LIST: ML315580



KEY	DESCRIPTION	PART NUMBER
1	Jaw A	88710
2	Jaw B	88687
3	Roller Bearing	88692
4	Cam	88694
5	Cylinder Tube	88714
6	Bushing Block Assembly G01	89026-01
7	Slider Bushing Rail	88713
8	Cap	88715-02
9	Head Assembly	89027-02
10	O-Ring	1950-263-1
11	Piston	88702
12	Shcs	59104-298
13	Piston Seal	78193-001-9
14	Wear Ring	78195
15	Piston Rod	88696
16	Slider Bushing	88697
17	Spring Step Jaw A	63081-01
18	Spring Step Jaw B	63081
19	Bushing Block Tierod	88693
20	Socket Head Cap Screw	59104-205
21	Socket Head Cap Screw	59104-172
22	Bushing Switch Pin	88706
23	Socket Head Cap Screw	59104-120
24	Retainer Cup Jaw A	74366-01
25	Retainer Cup Retainer Jaw B	63066
26	Jaw A Spring	74258
27	Jaw B Spring	15520
28	Socket Head Cap Screw Side 1	59104-160
29	Socket Head Cap Screw Side 3	59104-160
30	Standard Switch Side Cover	88688-01
31	Cover Side 3	88688
32	Bushing Pin	88689
33	Roller Pin	88690
34	Grease Zerk	63086
35	Rod Wiper	78198-01375-1
36	Rod Seal	1978-015-1
37	Dowel Pin	17831-164
38	Spring Cover Jaw A	88709
39	Spring Cover Jaw B	88691
40	Lock-Out Safety Pin Assembly	88699
41	Shock Pad	88701
42	Socket Head Cap Screw	59104-212
45	Spring Cover Jaw A	88711
46	Spring Cover Spring Jaw B	88703
47	Hex Head Cap Screw	71469-010
48	Protective Gasket	88704
49	Gasket Plate	88705
50	Socket Head Cap Screw	14308-021
54	Cover Switch Housing	88707
55	Socket Head Cap Screw	14308-117
56	Target	71254-01
57	Standard Switch Cover	88708
58	Socket Head Cap Screw	14308-114
59	Sensor	71483-003
60	Plastic Clamp	80832-37
61	Wire Tie	80832-38
62	CRFHS	71944-030-2-00

© Copyright 2017, by PHD, Inc. All Rights Reserved. Printed in the U.S.A.

CP315580-EU

PHD, Inc.
 9009 Clubridge Drive
 P.O. Box 9070, Fort Wayne, Indiana 46899 U.S.A.
 Phone (260) 747-6151 • Fax (260) 747-6754
 www.phdinc.com • phdinfo@phdinc.com

PHDinEurope GmbH
 Zum Carl-Alexander-Park 6
 52499 Baesweiler, Germany
 Tel. +49 (0)2401-619 77 0 • Fax. +49 (0)2401-619 77 99
 www.phdinc.com • info@PHDinEurope.de