



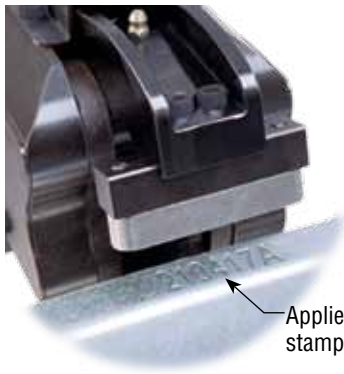
Automated Stamping for Part Identification

PNC66

ML315558

BENEFITS

- Provides a cost-effective solution for stamping identification characters into parts or material.
- High clamp force produces characters in draw quality steel.
- Reduces downtime to switch code.

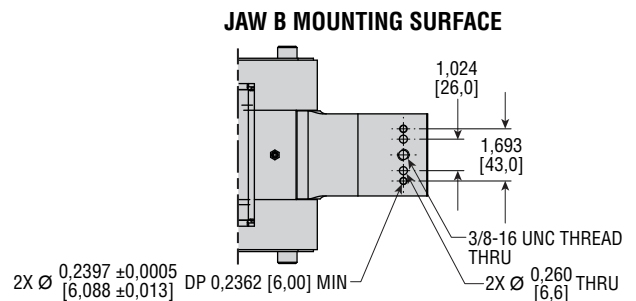
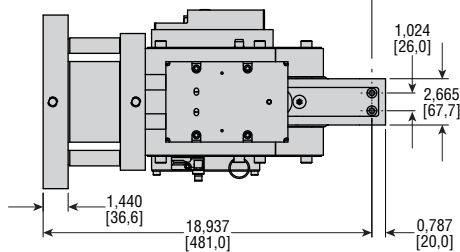
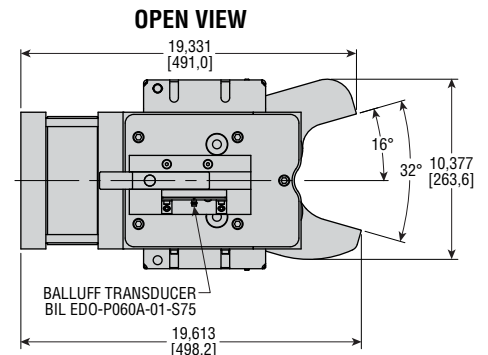
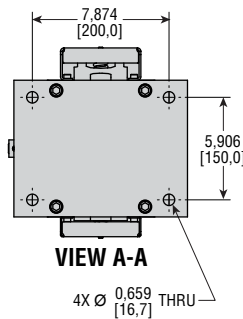
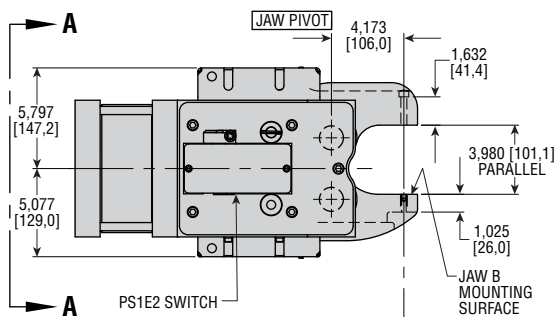


Applied in robotic cell to stamp shift codes onto parts.



ORDER CODE	ML315558
UNIT DESCRIPTION	PNC66P-5-A16-S16-PS1E2
JAW STYLES	A16-S16
TOTAL CLAMP FORCE	182 kN at 6 bar [40915 lbf at 87 psi]
OPERATING PRESSURE RANGE	4,5 to 6 bar [65 to 87 psi]
ESTIMATED WEIGHT	55 kg [121,3 lb]
TEMPERATURE LIMITS	-28° to 82°C [-20° to 180°F]
OPERATING TIME	1,5 seconds
LUBRICATION	Permanent for Non-Lube Air

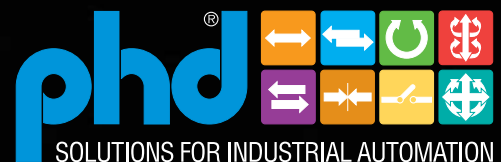
DIMENSIONS



CP315558-EU

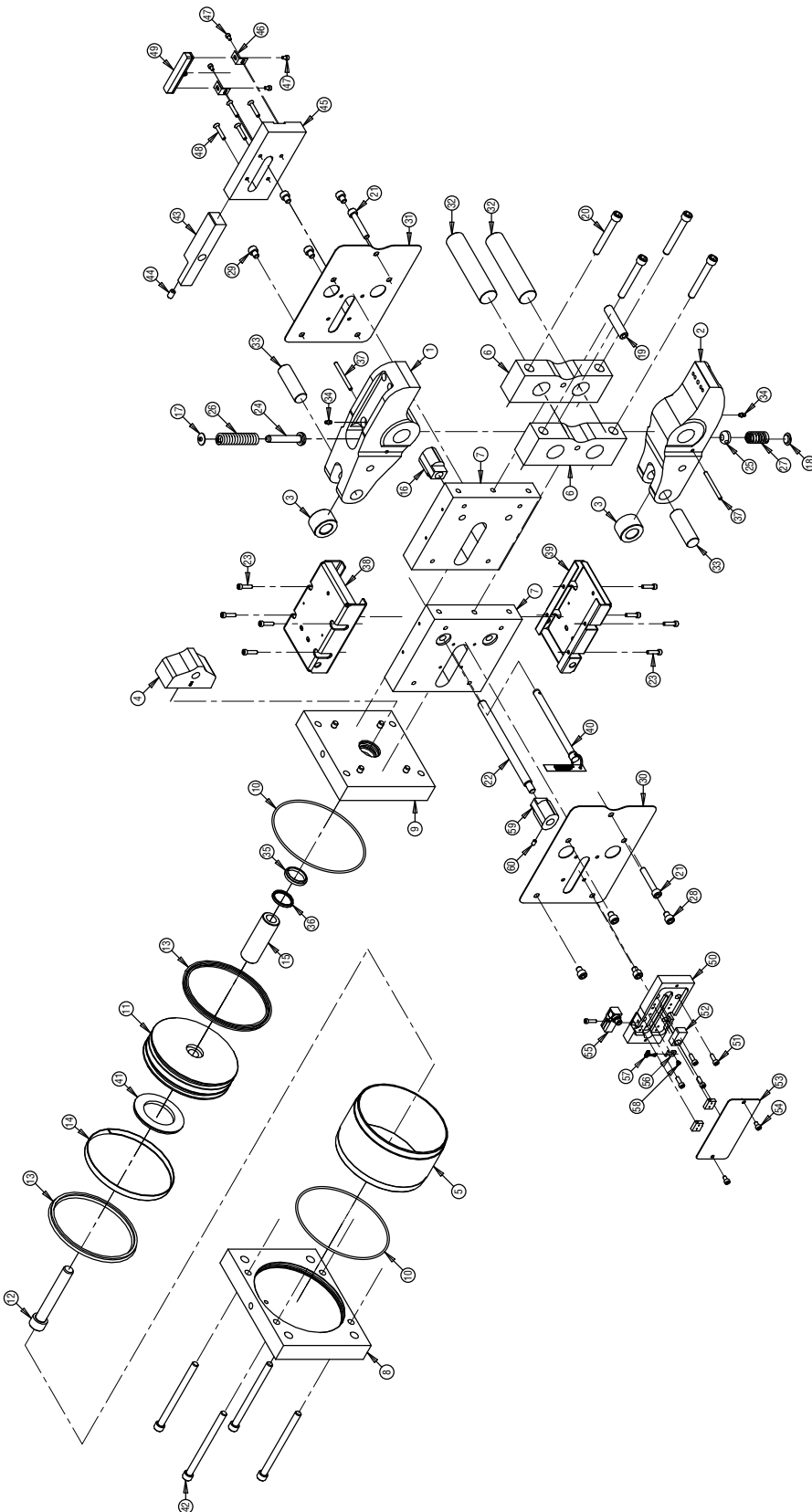


PHD is a member of the
MAC Distributor Network



www.phdinc.com

EXPLODED VIEW AND PARTS LIST: ML315558



KEY	DESCRIPTION	PART NUMBER
1	Jaw A	315558-01
2	Jaw B	315558-02
3	Roller Bearing	88692
4	Cam	88694
5	Cylinder Tube	88714
6	Bushing Block Assembly	315558-08
7	Slider Rail Bushing	88713
8	Cap	88715-02
9	Head Assembly	315558-07
10	O-Ring	1950-263-1
11	Piston	88702
12	SHCS	59104-298
13	Piston Seal	78193-001-9
14	Wear Ring	78195
15	Piston Rod	88696
16	Slider Bushing	88697
17	Spring Step Jaw A	63081-01
18	Spring Step Jaw B	63081
19	Bushing Block Tierod	88693
20	SHCS	59104-205
21	SHCS	59104-172
22	Switch Bushing Pin	315558-05
23	SHCS	59104-120
24	Retainer Cup Jaw A	74366-01
25	Retainer Cup Jaw B	63066
26	Spring; Jaw A	74258
27	Spring; Jaw B	15520
28	SHCS; Side 1	59104-160
29	SHCS; Side 3	59104-160
30	Cover; Side 1	88688-01
31	Cover; Side 3	88688-01
32	Bushing Pin	88689
33	Roller Pin	88690
34	Grease Zerk	63086
35	Rod Wiper	78198-01375-1
36	Rod Seal	1978-015-1
37	Dowel Pin	17831-164
38	Spring Cover, Jaw A	88709
39	Spring Cover, Jaw B	88691
40	Lockout Safety Pin Assembly	88699
41	Shock Pad	88701
42	SHCS	59104-212
43	Target Assembly	315558-06
44	Set Screw	17424-044
45	Sensor Mounting Plate	315558-03
46	Balluff Mounting Bracket	89068
47	SHCS	59104-098
48	SFHCS	59104-602
49	Baluff Bil Transducer	78011
50	Switch Housing Cover	88707
51	SHCS	14308-117
52	Target	71254-01
53	Standard Switch Cover	88708
54	SHCS	14308-114
55	Sensor	71483-003
56	Plastic Clamp	80832-37
57	Wire Tie	80832-38
58	CRFHS	71944-030-2-00
59	Modified Slider Bushing	315558-09
60	Set Screw	17424-087