



Commercial Laundry Solution

Jensen Bag Stop Conveying System Cylinder Replacement

ML#311706 - Replaces SMC - CQ2B25-25D

Provides Longer Life and Reduces Down Time for Critical Laundry Components

BENEFITS

- Drop-in replacement on front mount
- Fully field repairable making it very economical versus replacing the unit. This provides the lowest cost of ownership.
- Field tested with longer life because of double bearings
- Design based on PHD standard Series CR Cylinder
- Rod diameter thread matches competitive unit

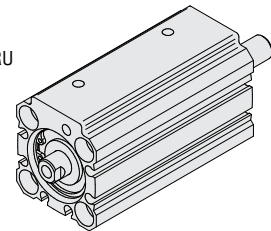
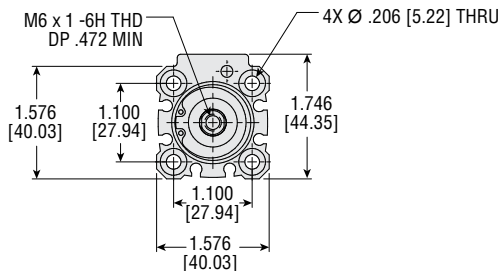
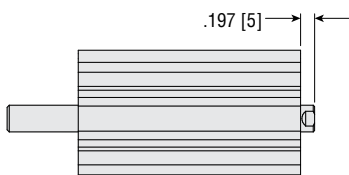
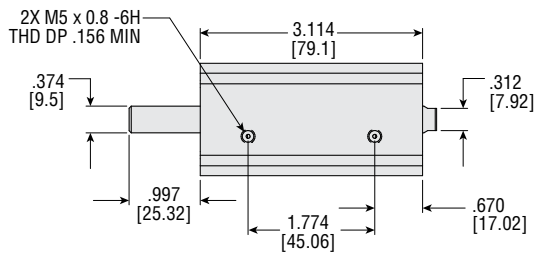


Problem

Cylinder is used to stop bags up to 400 lb. Current cylinder uses a single bearing. This unit has a tremendous amount of side load on it.

Solution

This design allows for increased side load capacity. This is due to the unit having a double bearing. The unit has lasted twice as long in the original field testing.



© Copyright 2013, by PHD, Inc. All Rights Reserved. Printed in the U.S.A.

CP311706

50-I 1/13 8919



PHD is a member of the MAC Distributor Network

PHD, Inc. • P.O. Box 9070 • Fort Wayne, IN 46899 • (260) 747-6151 • FAX (260) 747-6754
www.phdinc.com • phdinfo@phdinc.com